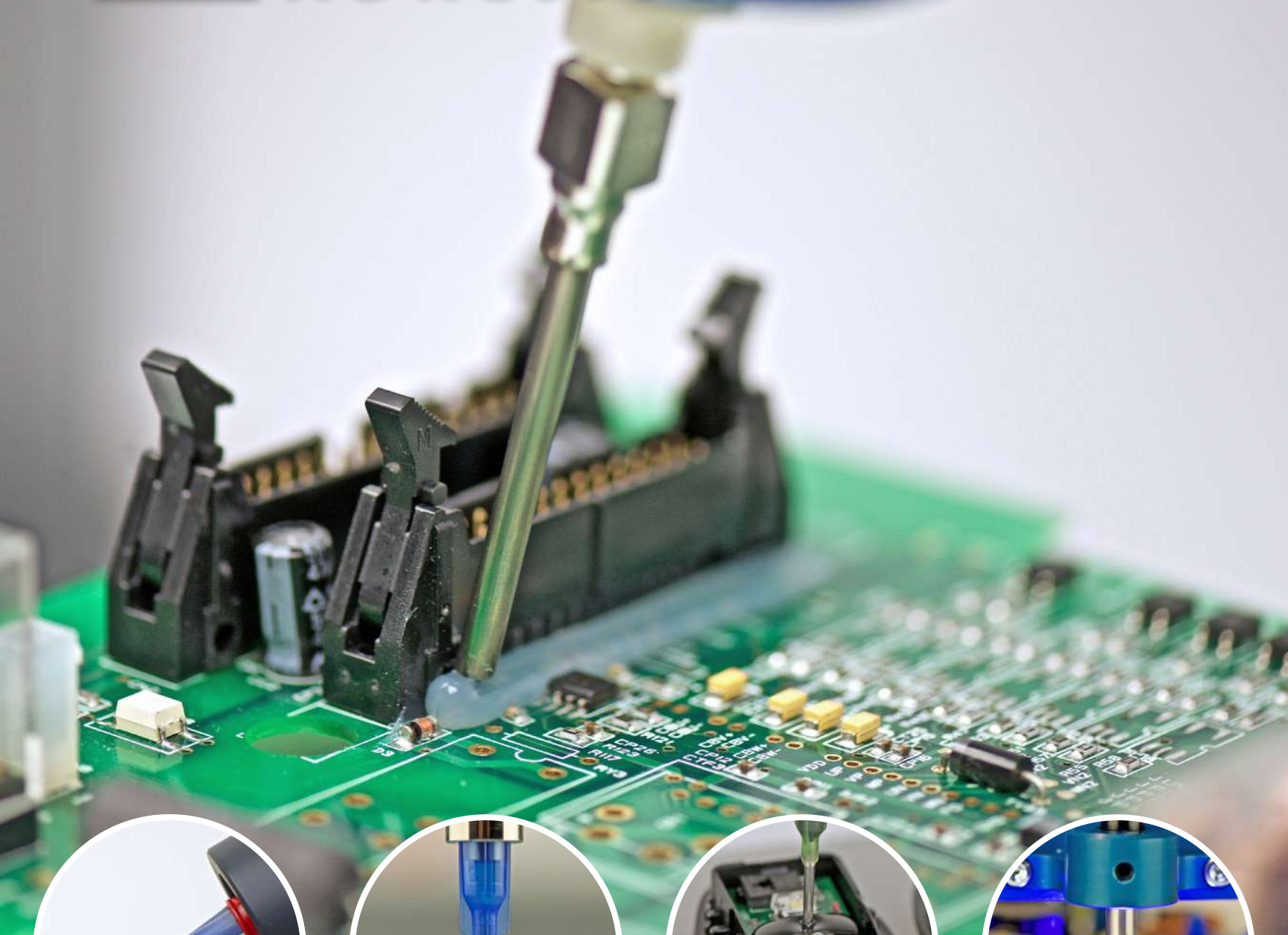


ELLSWORTH

ADHESIVES



THE ADHESIVE EXPERTS

Adhesives · Sealants · Coatings · Encapsulants · Lubricants · Tapes
Specialty Chemicals · Dispensing & Curing Equipment

WE ARE ELLSWORTH ADHESIVES

Ellsworth Adhesives is a global leader and trusted distributor of adhesives, specialty chemicals, and dispensing equipment. With 45+ years of experience, we excel at providing high quality products and services. Ellsworth Adhesives offers expert advice, valuable services, decades of experience, and a host of resources to ensure the total solution for our customers' application needs.

COMMITTED TO YOUR SUCCESS

Ellsworth Adhesives drives global design and process performance through adhesives and other formulated resin systems and services.

We deliver:

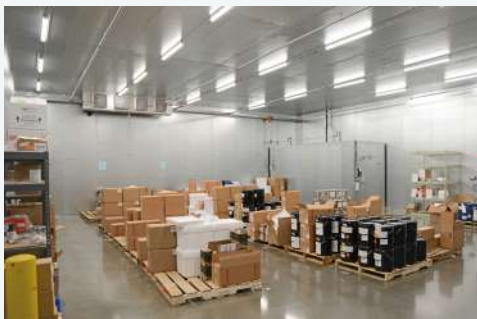
- **Customer focus** at all times
- **Integrity** in everything that we do
- **Quality** in our work
- **Cooperation** with our coworkers, business partners, and communities

GLOBAL DISTRIBUTOR

As a global leader in specialty chemical distribution, Ellsworth Adhesives operates stocking locations throughout the Americas, Europe, and Asia. This extensive network allows for fast lead times, enhanced inventory control, and reduced costs.

TECHNICAL DISTRIBUTION CENTERS

Ellsworth Adhesives is equipped with state-of-the-art technical distribution centers including advanced protective measures against chemical exposure, flammability, temperature changes, and other safety standards.



Refrigerated Storage



Digital Fulfillment/Technical Distribution Centers



Dispensing Equipment Labs and Showrooms

Optimum Temperature Storage to Manufacturer's Specification

Digital Warehouse Management System

Application Trials and Equipment Testing

Digital Monitoring of Shelf Life and Lot Control

Hazardous/Flammable/Aerosol Storage

Product and Process Validation

Over 250,000 sq. ft. of technical distribution space.

WHAT WE OFFER

Ellsworth Adhesives is dedicated to providing valuable services and total solutions to help our customers with their product selection process.

ASK THE GLUE DOCTOR



Engineering Sales Representatives (ESRs)

- Chemical, Electrical, Mechanical & Aerospace Engineers
- 200+ ESRs Globally

Technical Support Team

- Trained to find efficient solutions industrial applications

CERTIFICATION & DOCUMENTATION



We provide documents, such as:

- Certificates of Conformance
- Certificates of Origin & NAFTA
- SDS/TDS
- Manufacturer Test Reports & Certification
- REACH Compliant
- RoHS Compliant

DISPENSING SYSTEMS



Our line of dispensing equipment includes:

- Hot Melt Dispensers
- Contract Filling
- Meter/Mix Equipment
- Dispensing Robots
- Syringes
- Bottles
- Cartridges
- Barrels
- Valves
- Tips

TAPE CONVERTING



Ellsworth can die cut your tape or film applications increasing speed and accuracy of application while minimizing waste.

CUSTOM RESIN FORMULATION



ResinLab creates cost-effective, custom formulated:

- Adhesives
- Sealants
- Potting Systems
- Small or Large Projects
- High-Tech or Low-Tech Formulations

CUSTOM PACKAGING



KitPackers repackages bulk adhesives, sealants, and specialty chemicals into:

- One Component Systems
- Two Component Systems
- User-friendly Units
- ISO 9001:2015 Registered

LOW PRESSURE MOLDING



MoldMan Systems provides low pressure molding solutions like:

- Thermoplastic Machines
- Thermoset Machines
- One or Two Component Material Capabilities
- Mold Sets
- Full-Service Contract Manufacturing

CUSTOM LABELING



We provide custom labels with:

- Customer Name & Part Number
- Lot Number
- Origin & Expiration Dates
- Specification Reference
- PO Number
- Shelf Life & Storage Information

LOGISTICS & PACKAGING



Our products ship globally, we are:

- CUSECO Certified
- ITAR Compliant
- ISO 9001:2015 & AS9120B Registered

We have developed custom, innovative packaging to help protect materials.

DIVISIONS OF ELLSWORTH CORPORATION



SPECIALTY CHEMICAL DISTRIBUTION

Ellsworth Adhesives is a distributor of specialty chemicals and equipment; providing a wide range of adhesives, sealants, lubricants, coatings, encapsulants, tapes, specialty chemicals, maintenance/repair products, and application equipment. Ellsworth Adhesives is the only integrator specializing in the supply and logistics of specialty chemicals.

CUSTOM FORMULATION, PACKAGING & CONVERTING SERVICES



GDI Adhesives® is a leading pressure sensitive adhesive technologies manufacturer partnering with industrial companies seeking adhesive manufacturing, custom formulating, converting, & innovation guidance. Solutions are pioneered to fit the multitude of engineering complexities facing the world today.



KitPackers

KitPackers® offers custom packaging of adhesives, sealants, and specialty chemicals for manufacturers, customers, and resellers. There are a variety of formats for repackaging including flexible pouches, ratio-paks, duo-paks, single component cartridges, and syringes.



Resinlab

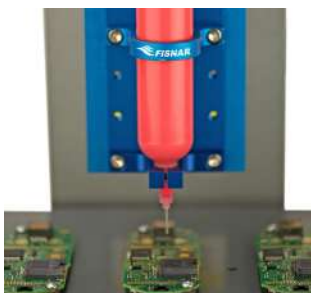
ResinLab® specializes in creating custom formulations to meet the customer's application requirements. Product development chemists respond to projects both large and small – using decades of experience to quickly satisfy design, manufacturing, and quality requirements.



TapeCase

TapeCase designs, converts, manufactures, and distributes a wide variety of adhesive tape products and provides custom tape solutions for nearly any application. An experienced team of experts assist with material selection and prototyping through to commercial production.

ELLSWORTH DISPENSING SOLUTIONS (EDS)



FISNAR

Fisnar® is a global supplier of dispensing equipment, automated dispensing systems, & supplies for the industrial, electronic, & medical device markets. Robot Video Trial Services are available to ensure end user accuracy.



FLUID RESEARCH

Fluid Research® is a leader in the design and manufacturing of precision, one and two component metering, mixing, and dispensing equipment for paste and liquid resin systems.



MOLDMAN SYSTEMS

LOW-PRESSURE MOLDING

MoldMan Systems™ builds automated, low pressure molding machines designed to encapsulate, protect, and seal electronics. The machines are versatile, easy to operate, and ideal for low to high volume production.

MATERIAL MANUFACTURERS



3M
Scotch-Weld, VHB, Fastbond
Adhesives & Tapes



ACULON
Aculon, NanoProof, NanoClear
Surface Nano-Coatings, Acustamp



AREMCO
High-Temperature Adhesives, Coatings,
Technical Ceramics Potting Compounds



Armstrong Epoxy
Armstrong
Epoxy Adhesives



Bostik
Thermelt, Thermogrip, Born2Bond,
Never-Seez
Adhesives, Sealants, Hot Melts & Lubricants



CEMEDINE
Super X, Metal Lock
Elastic Adhesives, Epoxy Resins, SGA



Darbond
Darbond
Engineering Adhesives and Sealants



Dow
DOWSIL, XIAMETER, SYLGARD
Silicone Adhesives, Sealants, Conformal Coatings



Dymax
Light-Weld, E-MAX, BlueWave, See-Cure
Adhesives, Coatings & UV Curing Systems



Merck EMD Electronics
Dynasolve
Solvents & Cleaners



Elantas PDG, Inc.
CONATHANE, CONAPOXY, CONACURE
Epoxy, Urethane Adhesives & Encapsulants



Elemelt
Hot Melt Adhesives,
Specialty Cleaning Products



Everwide Chemical Co.
EVERWIDE
Epoxy, Photo-Cured Resin, Silicone,
MS (modified silicone) resin



GDI Adhesives
QuikDot Pro, EconoDot, Auto Dot Pro
Pressure Sensitive Adhesives & Equipment



Henkel
LOCTITE, TECHNOMELT, BONDERITE
Industrial & Electronic Adhesives, Threadlockers



Humiseal (Chase)
UV40, 1B31, 1A27, 1A20
Conformal Coatings & Encapsulants



ITW Chemtronics
Electro-Wash, Max-Kleen, Flux-Off, CircuitWorks
Electronic prototyping, Assembly & Maintenance



ITW Performance Polymers
Devcon, Tru-Bond, 5 Minute Epoxy,
Plastic Welder
Epoxy & Urethane Adhesives



Plexus
Composite Bonding Methyl Methacrylates



LOCTITE
A Henkel Brand
Epoxy, Urethane & Threadlockers



NANOLOWX
NanoflowX
Nanocoatings For Electronics



Parker LORD
Maxlok, CoolTherm, Thermoset
Epoxy, Acrylic & Urethane Adhesives



Resin Designs
Resin Designs
UV Adhesives & Encapsulants



ResinLab
Cynergy, Cynergy Zero, silset, eleset
Custom Resin Formulation, Cyanoacrylates



RPM Technology, LLC
PolyGone, Digesil, eOx, PolyWipes,
PolySerapers, DPI
Sealing, Cleaning, Machining



Sanyu Rec
Epoxy Resin, Urethane Resin, Modified Resin



Sauereisen
Aluseal, Electrottemp, Insa-Lute
High Temperature Adhesives & Encapsulants



Sekisui Polymatech
Thermal Interface Materials, Thermal
Management Materials
Thermal Pad, Gap Pad, Gap Filler Thermal



Sika Corporation
SikaFlex®, SikaFast®, SikaSil®
Urethane Sealants/Adhesives



Techspray
Fine-L-Coat, Wondermask, Envirotech Electronic
Aerosols & Chemicals



Tesa Tape
ACXplus, PE Foam, Filmic, Masking, Safety Tape
High-Performance Industrial Tape

WELDTONE
Bonding, Protecting, Connecting,
Thermal Advanced Material Solutions for
Electronics Assembly

EQUIPMENT & ACCESSORIES MANUFACTURERS



ARINAR

Arinar
Low-Pressure Molding &
Fluid Dispensing Equipment



Crest Ultrasonics

Equipment, Chem-Crest
Industrial Ultrasonic Cleaning Systems



Crystal Mark, Inc

Swam-Blast
Conformal Coating Removal Equipment



Fisnar

QuantX
Micro-Dispense Equipment & Robots



Fluid Research

PosiPump, VersaMix
Meter, Mix & Dispensing Equipment



ITW Dynatec

DynaFlex, MicroBead
Hot Melt Adhesive Applicators



Kakuhunter

Revolution-Rotation
Planetary Centrifugal Mixer



medmix

COX, MIXPAC, MK
Static Mix Nozzles & Hand-Held Dispensing
Systems



MoldMan Systems

MoldMan, Mold-Man® Machines
Low Pressure Molding Systems



PPG Industries

Semco, Semkit
Cartridges, Plungers & Semkit Packages

INDUSTRIES SERVED



Aerospace



Defense



Furniture



Medical



Battery



Electronics



General
Industry



Power



Consumer
Products



E-Mobility



Lighting



Transportation

Ask the Glue Doctor

info@ellsworth.co.th



WE ARE GLOBAL

1000+
EMPLOYEES

21+
COUNTRIES

25+
DISTRIBUTION CENTERS

HEADQUARTERS

North America

COMPANY HEADQUARTERS
W129 N10825 Washington
Drive Germantown, WI 53022

1(877) 454-9224

info@ellsworth.com

www.ellsworth.com

Asia-Pacific

Unit 2505-6, 25th Floor,
Prosperity Center, 25
Chong
Yip Street, Kwun Tong,
Kowloon, Hong Kong.

00852 2805 8333

info@ellsworth.com.hk

www.ellsworth.com.hk

Thailand

184/221 ชั้น32
อาคารฟอรัมทาวเวอร์ ถ.รัชดาภิเษก
แขวงห้วยขวาง เขตห้วยขวาง
จ.กรุงเทพฯ 10310

66 2 6452820-1

info@ellsworth.co.th

www.ellsworth.co.th

